

ARCHITECTURE REVIEW

Total Homes: 98
In Review: 41 | Under Construction: 43 | Completed: 14



Featured Home: The Wright Residence

Phase: Under Construction

Architect: Clare Walton, Walton Architecture + Engineering

Builder: NSM Construction

Square Feet: 4,875 plus Main Garage and Studio Garage

Features: Great Room, Dining Room, Sun Room, Wine Room, Office, 4 Master Suites and 4.5 Bathrooms

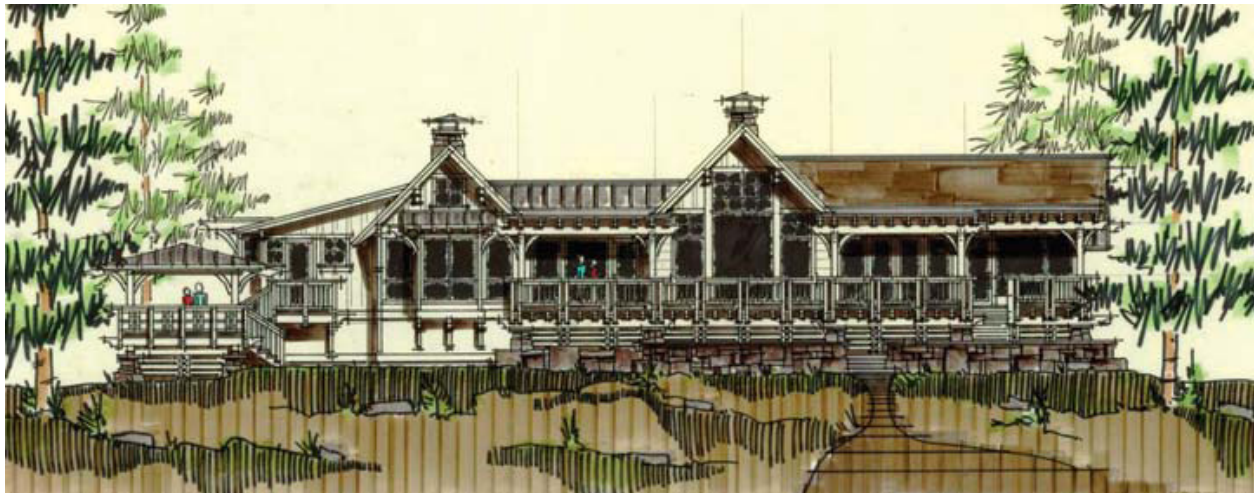
Upon arriving at the Wright Residence one descends along a meandering driveway, lined with clusters of fir trees, as this charming mountain home unfolds into view. The entry foyer, flanked by two stone pillars, draws one immediately into the Great Room with Lookout Mountain framed in its expansive windows. The southern exposure floods the home with light in the Kitchen, Dining and Sun Room, which are gathered off of the Great Room on the eastern side of the home. The Office and Master Suite, both featuring fireplaces, are located on the western side of the home. Extending the length of the southern facade, an expansive rear covered deck provides an abundance of mountain air, views and light to the interior spaces, while providing a peaceful area for outdoor dining and lounging.

Off the eastern wing is an additional main level Master Suite with private deck leading to an outdoor garden. Up a set of stairs, a third Master Suite is positioned above the double garage. On the western end of the home, one crosses a glass-enclosed bridge, above a landscaped dry creek bed, to a single-car garage or up a second set of stairs to a fourth Master Suite. Each of these second floor suites is equipped with a sitting area, kitchenette, full bathroom, walk-in closets and private balconies – accommodating the Wrights request to have adaptable spaces suited for being well-appointed Guest Rooms, Billiards Room, Theater, or to be simply used for entertaining friends and family.

The Wrights celebrated breaking ground this spring and anxiously await their move-in date in the Fall of 2011.

Martis Camp | 11253 Brockway Road, Suite 201, Truckee, CA 96161 | 530.550.2990 | www.martiscamp.com

©2010



Martis Camp | 11253 Brockway Road, Suite 201, Truckee, CA 96161 | 530.550.2990 | www.martiscamp.com